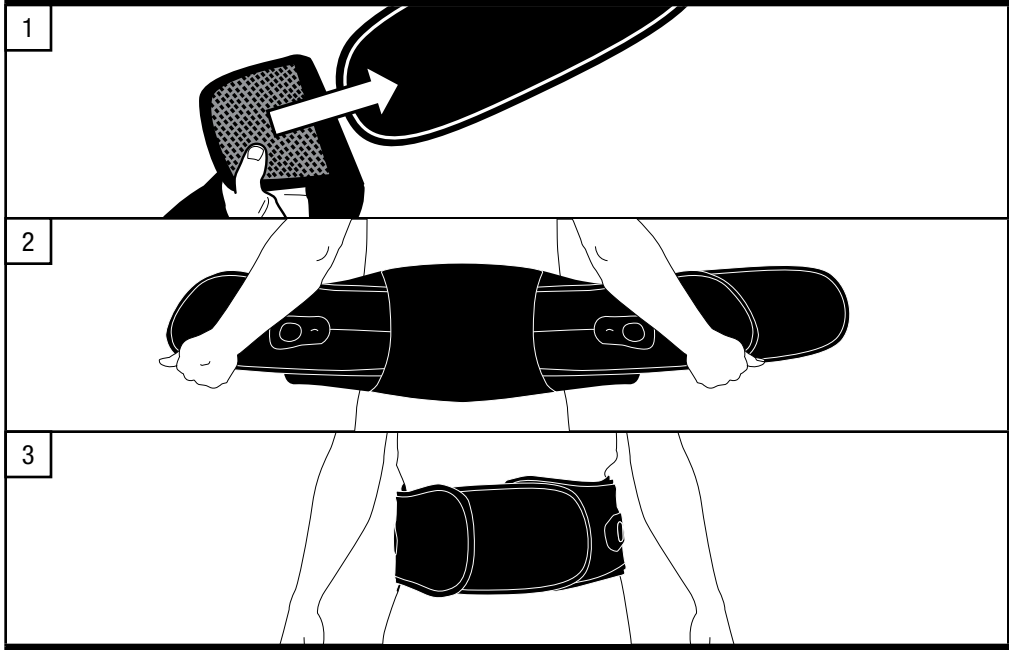
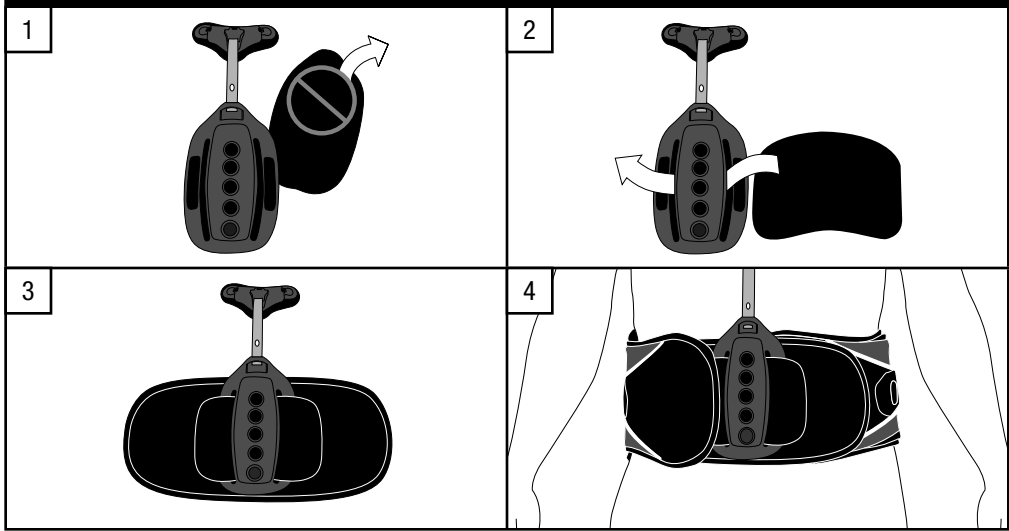


Extension Panels

ASPEN® AND UNIVERSAL EXTENSION PANELS



VISTA® TLSO ADAPTER



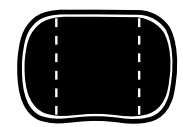
EXTENSION PANELS



UNIVERSAL EXTENSION PANEL



ASPEN® EXTENSION PANEL



VISTA® TLSO ADAPTER

ENGLISH	ESPAÑOL	DEUTSCH	ITALIANO	FRANÇAIS	中文
Not made with natural rubber latex.	No está hecho con látex de goma natural.	Ohne Naturkautschuklatex.	Non realizzato con lattice di gomma naturale.	Pas fabriqué avec du latex de caoutchouc naturel.	并非采用天然胶乳制造。

LIMITED WARRANTY
 Aspen Medical Products, Irvine, CA 92618, warrants to the user who originally purchases this product that it is free from defects in material and workmanship. The sole obligation of Aspen Medical Products in the event of breach of warranty shall be to repair or replace the defective product or part(s).

- Aspen Medical Products shall have no obligation under this limited warranty in the event:
- (a) The product was not purchased from Aspen Medical Products or through its authorized channels of distribution;
 - (b) The product is altered;
 - (c) Any parts not supplied by Aspen Medical Products are inserted into the product; or
 - (d) The product is not used in accordance with the Aspen Medical Products Instructions for Use.

THE FOREGOING IS THE SOLE AND EXCLUSIVE REMEDY FOR FAILURE IN SERVICE OF, OR DEFECT IN, THE PRODUCT. ASPEN MEDICAL PRODUCTS SHALL NOT BE LIABLE UNDER THIS OR ANY IMPLIED WARRANTY FOR ANY DIRECT, SPECIAL, INCIDENTAL, OR CONSEQUENTIAL DAMAGES. THIS WARRANTY IS IN LIEU OF ALL OTHER WARRANTIES, EXPRESSED OR IMPLIED, INCLUDING THE WARRANTY OF MERCHANTABILITY OR FITNESS FOR A PARTICULAR PURPOSE OR USE, AND ALL OBLIGATIONS OR LIABILITIES ON THE PART OF ASPEN MEDICAL PRODUCTS FOR DAMAGES ARISING OUT OF OR IN CONNECTION WITH THE USE OF THE PRODUCTS, WHICH ARE HEREBY DISCLAIMED AND EXCLUDED BY ASPEN MEDICAL PRODUCTS.

This warranty gives you specific legal rights and you may have other rights which vary from state to state.
 Warning: To ensure proper use, please review all material.
 A listing of authorized distributors in your area is available upon request.

READ INSTRUCTIONS BEFORE USE. Proper training in the use of this device should take place before it is applied. These directions are guidelines only and are not offered as medical recommendations.

IF YOU SUFFER FROM A SERIOUS MEDICAL CONDITION, WE STRONGLY SUGGEST THAT YOU CONSULT WITH A LICENSED HEALTH CARE PROFESSIONAL BEFORE USING THIS PRODUCT. PERMANENT INJURY MAY RESULT FROM ANY IMPROPER USE OF THIS PRODUCT. PROPER FITTING IS REQUIRED FOR THIS PRODUCT TO BE EFFECTIVE. UNDER SOME CIRCUMSTANCES, THIS PRODUCT MAY BE PRESCRIBED BY A PHYSICIAN. PLEASE SEE THE ACCOMPANYING LIMITED WARRANTY FOR FURTHER INFORMATION.

