

## Aspen® Cervical Collar Guidelines



### Measure

Select the proper collar by using the Aspen Collar Sizing Guide.



### Squeeze

After centering the back panel, gently squeeze the front panel for easy application.



### Scoop

Scoop the front panel up under the chin.



### Tighten

Evenly tighten both sides of the collar using the trach hole as an anchor point.

## Check the Fit

- 1 Chin Flush?**  
The chin piece plastic should be flush with the end of the chin.
- 2 Slack Out?**  
Remove all slack. Evenly tighten and re-tighten the straps for a tight fit and front/back panel overlap.
- 3 FlexTabs™ Bent?**  
If the collar has been properly sized and tightened, the FlexTabs will be "loaded" to spread the support. **Note:** the inner trach bar should never touch the airway.



## Occipital Support Strap™



The Occipital Support Strap enables you to further customize the collar by creating compound curves that better follow the contours of the occiput of the ambulatory patient.



This improves the support and comfort by creating an adjustable, three-dimensional "shelf" that cradles the back of the head.

## Back Panel Options

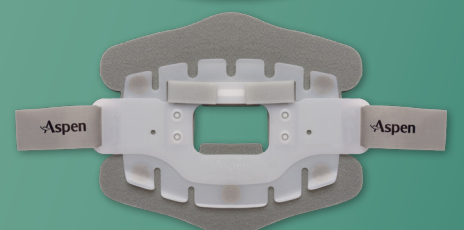
### Small

Circumference: 12-20 in  
Indications: small necks



### Standard

Circumference: 14-21 in  
Indications: most patients



### Large

Circumference: 16-25 in  
Indications: large necks, fluid retention

